

# Pat-Add DA 202

## Non-ionic wetting agent for WB coatings



PATCHAM

**Pat-Add DA 202** consists of a hydrophobic backbone based on renewable resources modified with multi anchoring hydroxyl-functional branched polyethers. The specially designed tri-hydrophilic cut polymer allows higher packing density giving improved wetting and stability.

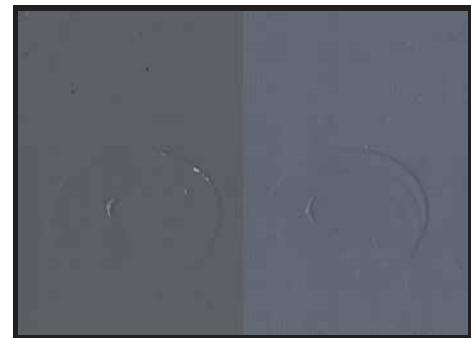
### Features of Pat-Add DA 202

- The branched polymer backbone is more mobile as compared to conventional straight-chained products.
- It can thus rapidly migrate away from the air-liquid interface and has a reduced foam stabilizing effect
- Strong prevention of pigment flocculation, floating, flooding, and pigment settling
- Improves stability of various emulsion paints
- Super wetting characteristics enables better dispersion
- Promotes substrate wetting due to its ability to reduce surface tension



Pat-Add DA 202 Reference

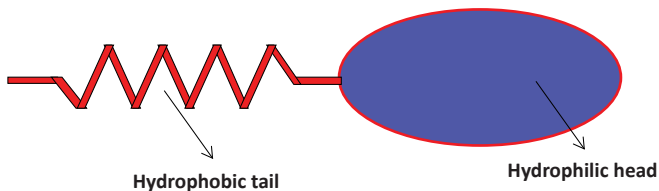
#### Compatibility of 70% Emulsion Paint with PC Black



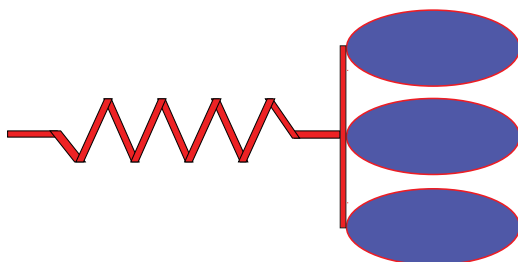
Pat-Add DA 202

Reference

#### Classical nonionic wetting agent



#### Tri-Hydrophilic Cut Polymer - Pat-Add DA 202



- Recommended for all architectural waterborne paints and inks
  - Best results in conjunction with Pat-Add DA 103 or Pat-Add DA 108
  - For in-plant pigment paste
  - Stage of Addition: Millbase
- Dosage:  
0.1-0.5% on total weight of paint formulation